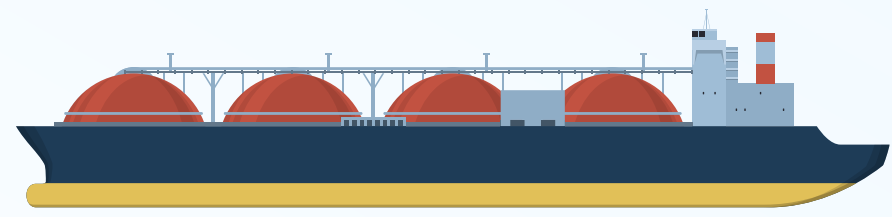


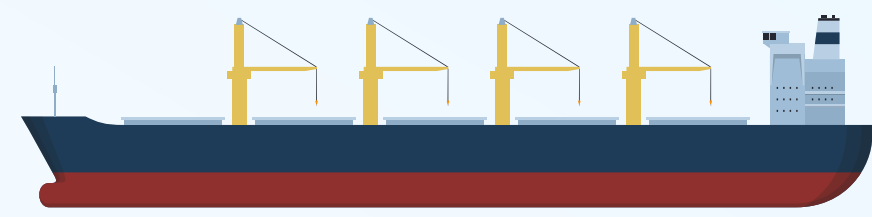
# Safe Entry Redefined: The Shift to CO<sub>2</sub> Mandates and Mandatory Enclosed Space Registers



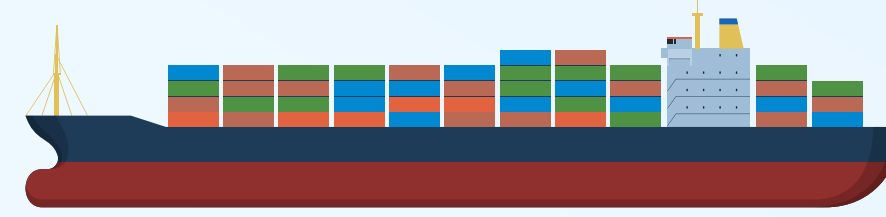
This leads to necessary changes on specific vessels



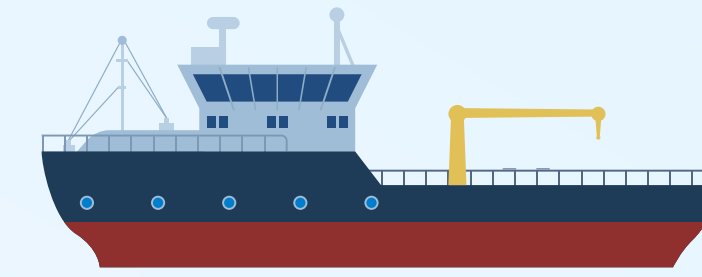
Tanker



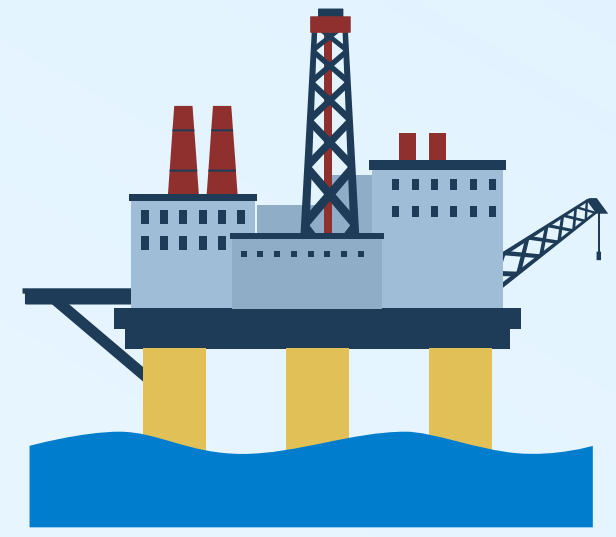
Bulk Carrier



General Cargo



Offshore Support Vessel



Oil Rigs & Jackups

Oil / Gas

Chemicals

Non hazardous cargo

Toxic gas emitting cargo



2x

2 x X-am 5000/5600  
with external pump



2x

2 x X-am 8000  
2 x X-am 5000/5600



2-nx

4-nx

2 - n x X-am 8000  
4 - n x X-am 5000/5600



2x

4x

2 x X-am 8000  
4 x X-am 5000/5600



2x

2x

2 x X-am 8000  
5 Gas + additional  
Tox and VOC  
2 x X-am 5600  
5 Gas + additional  
Tox or organic vapors



2x

2 x X-am 5000/5600  
with external pump



2x

2 x X-am 8000  
5 Gas + additional  
Tox and H<sub>2</sub>  
2 x X-am 5600  
5 Gas + additional  
Tox or H<sub>2</sub>

\*X-am 5000/5600/8000 equipped as standard with 5 Gas: Ex / O<sub>2</sub> / CO / H<sub>2</sub>S / CO<sub>2</sub>